




PRECISE

Technologies... Innovations...

- 
- More Than 25 Years of Experience
 - State-of-the Art Manufacturing Facilities
 - Govt. Recognized R&D Centers
 - Exporting To More Than 65 Countries

Introduction

Precise Group is Emerging as a Global Player in Several Verticals in Healthcare.

Established in 1997, the **PRECISE Group** has emerged as one of India's most respected pharmaceutical companies, with a robust annual turnover of **USD 50 million**. Headquartered in Mumbai, we offer end-to-end pharmaceutical solutions across **APIs, Intermediates, Finished Formulations and Veterinary Products** positioning ourselves as a trusted, one-stop partner in healthcare innovation.

Backed by a team of **100+ skilled professionals**, a **dedicated Formulation & Development (F&D) unit**, and a **highly experienced regulatory team**, we consistently deliver excellence from concept to commercialization. Our deep-rooted industry expertise, agile infrastructure, and strong global network empower us to **navigate complex markets and meet the evolving needs of the pharmaceutical world**.

With innovation at our core and quality as our foundation, **Precise Group is rapidly expanding its global footprint-redefining possibilities in healthcare and setting new standards in pharmaceutical manufacturing**.



Core Strengths

At Precise Group, we blend scientific innovation with a legacy of integrity and dedication to deliver trusted, high-quality pharmaceutical solutions. Powered by robust R&D and a diverse product portfolio, we specialize in key therapeutic areas such as Cardiology, Gynecology, CNS, Gastrointestinal Care, Diabetology, Dermatology, VMN, Pain Management & recently ventured Veterinary products. Our patient-centric approach and future-ready mindset position us at the forefront of personalized and transformative healthcare.



API



Formulations

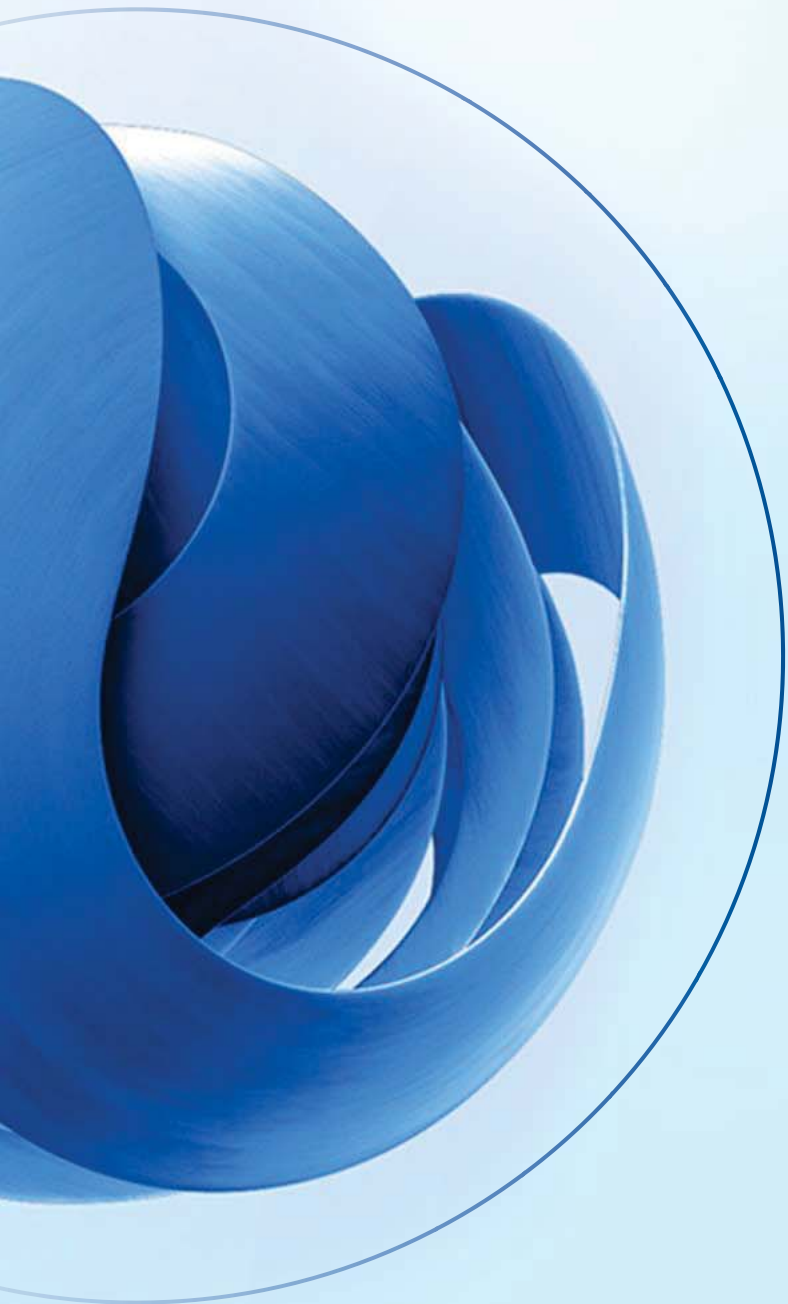


Intermediates



Pellets





Vision

To be a globally innovative and influential force, delivering affordable, personalized, and transformative healthcare solutions for a healthier world.

Mission

Our mission is to advance global health by offering cost-effective and cutting-edge research, driven by technology, scientific excellence, and a passion for healing."

Infrastructure



Head Office
Bhandup
Mumbai



Plant 01
D-90
Navi-Mumbai



Plant 02
C-384
Navi-Mumbai



Plant 03
Nashik
Maharashtra



Plant 04
Vijayawada
Andhra Pradesh



Plant 05
Mahad
Maharashtra



R&D
C-384
Navi Mumbai



R&D
Baroda
Gujarat



Upcoming R&D
Ambernath
Maharashtra





Japanese

Approval Received



China IDL

Approval Received



Russia

Approval Received



Iran

Approval Received



CADIFA

Approval Received

An abstract graphic on the left side of the slide, consisting of several overlapping, curved blue bands that form a circular, tunnel-like shape. The bands have a slight gradient and are set against a light blue background.

Thinking Ahead...

Future Inspections Expected

EU

KFDA

COFEPRIS

Global Footprints

Exporting products to more than 65 countries worldwide.

Innovative R&D capabilities which undertake path-breaking research that shapes the future of healthcare.

Regulatory support involving registration of products, conducting clinical studies, BE, Liaising, and interacting with drug authorities worldwide.

- Medichem, Spain
- Jamjhoom Pharmaceuticals, Saudi Arabia
- Scinopharm, Taiwan
- Tabuk Pharmaceuticals, Saudi Arabia
- Chemo International, Switzerland
- Indukern A.G., Switzerland
- Asofarma Group, Argentina
- Highnoon Labs, Pakistan

- Getz Pharma, Pakistan
- Square Pharmaceuticals, Bangladesh
- Uniao Quimica, Brazil
- Teuto, Brazil
- Lab Saval, Chile
- and many more...



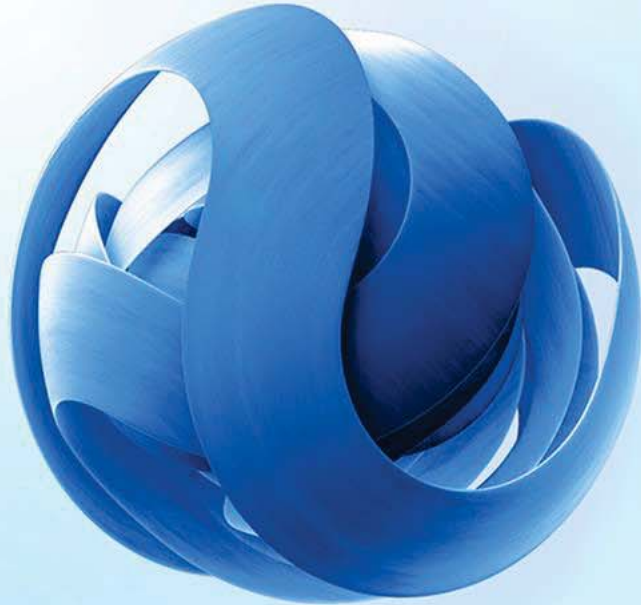
Our major customers in India:

- Abbott India
- Dr. Reddy's Ltd., India.
- Glenmark Ltd., India.
- Lupin Ltd., India.
- Ranbaxy Ltd., India
- Sun Pharmaceuticals Ltd., India.
- Wockhardt Ltd., India
- Mankind Ltd
- Aristo Pharma
- Alkem Labs
- Torrent Pharma
- Intas Pharma
- and many more...

Our facility audited by:

- Abbott India
- Abidi Pharma, Iran
- Dr. Reddy's Ltd., India.
- Glenmark Ltd., India.
- Lupin Ltd., India.
- Ranbaxy Ltd., India
- Sun Pharmaceuticals Ltd., India.
- Wockhardt Ltd., India
- Getz Pharma, Pakistan
- Incepta Pharma, Bangladesh





Let's Grow Together!

Corporate Office : E-311 & E-312, 3rd Floor, Eastern Business District, Neptune Mall, L.B.S. Road, Bhandup (W), Mumbai – 400078, (INDIA).

Phone: +91 22 6782 8600

Email: info@precisegroup.co.in

Website: www.precisegroup.co.in